

Sly
electronics

Attention :

- 1、 We are trying to perfect everything on this manual when we writing the description, however we can not ensure there is not any miss or loss.
- 2、 We take the responsibility to keep in good repair for this player, however we can not take responsibility for everything damaged by software operation on mistakes, or even any data missing during product repaired or other mistakes.
- 3、 The software, hardware or instruction manual are subject to change and improvement should without notice .All rights reserved.

Reminder :Thank you for choosing the MP3 player! Please read the following user manual carefully to ensure easy to operation of the player.

Catalogue

Attention	2
System request.....	5
1.instruction.....	6
1.1 Installation of the driver CD.....	6
1.2 Installation the battery.....	7
2. Connect to PC and download.....	7
2.1 Connect to PC.....	7
2.2 Download MP3 files.....	7

2.3 Disconnect USB port setting.....	7
3. Basic operation.....	9
3.1 Button and function.....	9
3.2. Operation of ON/OFF.....	10
4. How to use your MP3 player.....	10
4.1 Play MP3 file.....	10
4.2 Lock function.....	10
5. Software update method.....	11
6. Familiar fault solutions.....	13
7.Detailed Specifications.....	14

Attention

- (1) Please do not use the player with earphone while driving an vehicle or riding a bicycle, It is not only dangerous, but also against the law. And please keep your volume down when crossing streets.
- (2) Please insert earphone into earphone jack before opening the player in order to avoid spoiling the earphone, By this way, player can be taken good care.
- (3) Please do not expose to direct sunlight, heat source. Please turn off player when not in use.
- (4) Please do not expose to direct sunlight, heat sources or dusty areas and please keep away from water .Please use soft wet-cloth to clean the dirty surface.
- (5) Please do not cleaning the player with chemicals such as alcohol or thinner.
- (6) Prevent static, avoid the extreme dry surroundings.
- (7) Do not disconnect the player with PC while you are doing “format” or “download” file.
- (8) When you use this player as a USB stick, please always follow the correct operation method .Any misuse may cause file lost



9) Attention: Because of the different memory calculating method and the player software (firmware) is stored in the device flash memory and, it will cause the difference between flash memory marked capacity and real capacity. The real flash memory capacity is lesser than the marked memory capacity of this device is normal. Due to different firmware size, it will have the different free flash memory capacity. Please refer the table as below for more details.

Marked capacity	Real capacity range	Free capacity range after stored firmware
128MB	122MB~128MB	73MB~127MB
256MB	244MB~256MB	191MB~255MB
512MB	488MB~512MB	428MB~511MB
1GB	953MB~1000MB	879MB~999MB
2GB	1907MB~2000MB	1804MB~1999MB

System request

System requirements of MP3 player

Microsoft ® Windows98SE/2000/Me/XP

Pentium 200MHZ or greater

USB port supported

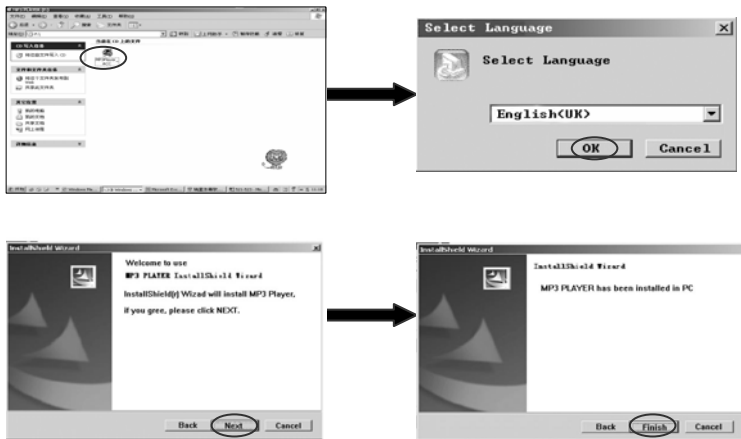
120MB of available hard disk space

Mouse installed

CD-ROM driver

1. Installation instruction

1.1. Install the driver for Windows operating system 98SE



1.2 Installation battery

Install one LR03 AAA size 1.5V alkaline or 1.2V NiMH battery properly upon indicator on the player.

Press the ▶ || button to power the player on and enter the MP3 standby mode.

2. Connect to the PC and download

2.1 Connecting to a PC

Before operating, please make sure the player is power off. Connect the USB cable to the PC' s USB port and connect the other side to the player' s post.

2.2 Download MP3 songs

To download the files from your computer, perform the following steps:

1. Open the Windows Explorer or "My computer" The new "Removable Disk" appears.
2. Select the your favorite MP3 or WMA music files on your computer and right click on your mouse to select "copy"..
3. Open the new "Removable Disk" and right click on your mouse to select "paste". The following picture will appear on your player.

Indicator light will turn on, when the player is connecting with the USB port of the computer. And then turn off after 5 minutes

Indicator light will turn on when downloading the MP3 songs to player.

Reminder: the root directory of player can only hold no more than 99 pieces files, the subdirectory of player can only hold no more than 99 pieces files.

2.3 Disconnect USB port setting

A. Remove USB device" Double click the icon "safely remove the hardware"



B. Select "USB Mass Storage device", and click the "STOP", Stop using hardware appeared on screen as bellow.



C. Select OK to ensure it is safely remove the hardware from the PC.

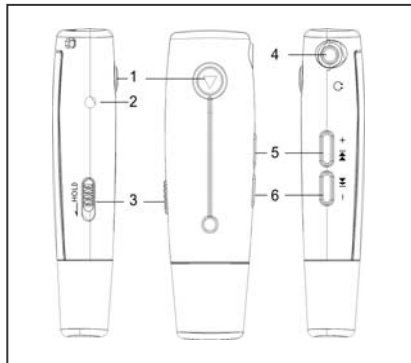


Warning: An error might occur if remove the connection of the USB cable when transferring data. After data transferred and "Safe to remove hardware "window appeared the player can be removed from PC safely! While the USB cable is operating, other keys on the player are unavailable.

3. Basic operation

3.1 Button and function

- (1) Play/pause/Stop
- (2) Indicator Light
- (3) Hold
- (4) Earphone Jack
- (5) ►| /VOL +
- (6) VOL -|◄◄



3.2 Power ON/OFF operation

On the tune off Menu, press ▶ key, The player start work after the indicator light glitter for 5 seconds

On the play Menu or pause Menu, the player save the data and get into power off menu.

4.How to use your MP3 player

4.1 Play MP3 file

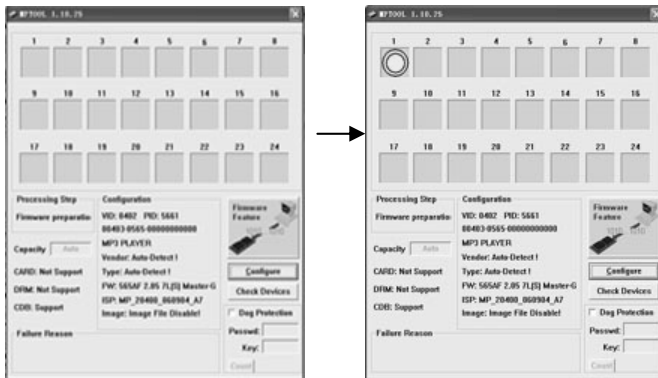
- A. Press ▶ key bottom to start play, press again to pause while the indicator light is on, Press the key third times the player start playing again. The indicator light glitter once 1 second.All the songs will shuffle repeat play.
- B. On the play Menu or pause Menu, press VOL/ |◀- or ▶| /VOL+ to forward songs or backward songs
- C. On the play Menu, , Keep pressing VOL/ |◀ or ▶| /VOL+ to tune the volume.
- D. On the play Menu or pause Menu, press ▶ key for 2 seconds, player save data and get into power off menu.

4.2 Hold function

On any playback Menu ,push Hold key per arrow head direction to lock the player. On the hold Menu, all of the function except power ON/OFF is can be used. Then you can see the lock icon on the LCD display, you must push Hold key to opposite direction and then other button can be used available. (MP3 can not download the songs when it is locked)

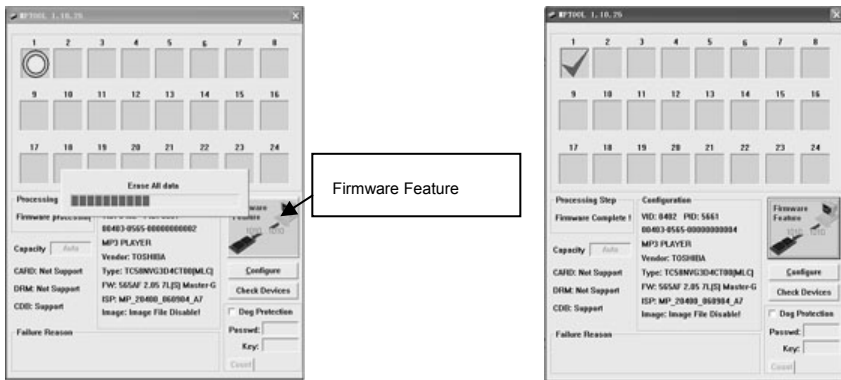
5. Software upgrade method

- A. Firstly, please find out the “Factory4.exe” progress in the compress bag and then double click the “Factory4.exe” icon.
- B. Hold and press the “V+” button and plug the MP3 Player in the PC USB port. Then there will be a yellow ring display in the NO.1 blank shown as picture 2.



- C. Click the “Firmware Feature” to begin upgrade shown as picture 3.

D. When the yellow ring changed to be a green tick, the upgrade will be successful shown as picture 4.



Remind: Please copy the files of player to somewhere, because the player will format itself automatically after the process update. Please go to website to get some information about firmware upgradeable and the way of format for player

6. Familiar fault solutions

No sound at playing.	Low volume or no music inside the memory. Battery is out of power. MP3/WMA music file is destroyed.	Adjust volume, or download the file. Please recharge the battery. Download other music files.
Can not download from PC.	HOLD key is on the lock position. or DISC may be protected USB can not contact with PC normally. The exiting position was wrong.	Pull the HOLD to the opposite position Contact USB again until be recognized by PC. There are no more than 256 pieces files can be saved under root list if file name is over 8 characters. if name is stored over, please new-build list and copy.
Can not play the MP3 file that is made by user.	The player can only support the standard compressed format, please do not download non-standard MP3 music especially layer-1 or layer-2	Re-download the standard MpP3 file.

7. Detailed Specifications

Bit rate: 32~320Kbps

S/N ratio: >85dB

Distortion: <0.05%

USB port: USB 2.0 full speed

Memory size: 128M/256M/512M

Dimension: 86.2*26*18mm

Output power: 5mW*2

Weight:18.5g

Battery life: >9 hours, low consume

Frequency: >80(1KHZ)

Operation conditions: Humidity <85%,-5~40 degree

File-saving condition: Humidity <90%,Normal temperature

Getting Started:2GB:1000 songs

4GB:2000 songs