



USER MANUAL



4GB Video MP3 Player with Camera and Video Recorder on a 2.4" Color Screen

Overview

1. Foreword

Thank you for purchasing this player. Please read this manual carefully before using the product. Specifications and software updates may be subject to change without notice. Some pictures in this manual may be different than the product display yet it should perform the same functions.

2. Warnings

- a) Do not use the product in extreme temperatures, dusty or wet environments
- b) Do not leave the product under direct sunlight
- c) Handle the player with care or the hardware and housing may be damaged
- d) When inserting or removing a TF card, make sure the player is set to the “OFF” position.
- e) When formatting or transferring files, do not disconnect the USB cable from the PC, this may cause damage to the player (Always do “Safely Remove”)
- f) Do not open the housing of the player
- g) Keep away from extremely dry places to avoid damage caused by Electrostatic Discharge (ESD)
- h) Avoid formatting the player. If formatting is necessary, four directories MUST be created for the player to resume working (AUDIO, VIDEO, PICTURE, and EBOOK);



We urge you to first read the Quick Start Guide as that will answer most of your questions

Table of Contents

● Controls.....	P2
● Charging the Player.....	P3
● Basic Operations.....	P3
● Adding Pictures.....	P4
● Adding Music.....	P4
● Adding Videos.....	P4
● Adding TXT Files.....	P6
● Video Player.....	P6
● Audio Player.....	P8
● Picture View.....	P9
● Camera.....	P10
● Video Recording.....	P12
● Audio Recording.....	P13
● Learning Mode (E-Book).....	P14
● Tool.....	P15
● System Setup.....	P17

- Communicating With The PC.....P18
- Adding a TF Card.....P19
- Adding/deleting Files.....P19
- Formatting the Player.....P20
- Disconnecting From the PC.....P21
- Technical Specifications.....P21
- Common Problems.....P22

4. Requirement for PC

- a) At least Pentium 100MHz;
- b) OS of Windows 98/2000/ME/XP/Vista;
- c) USB slot;
- d) CD-ROM drive;
- e) At least 15MB free hard disk space;
- f) At least 32MB memory;

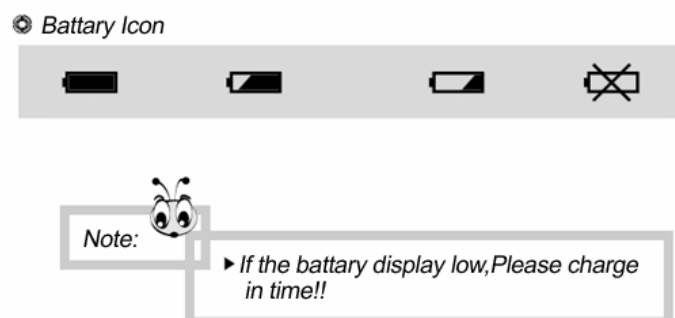
5. Layout of the Player



SLY CAM Controls

User Guidelines

1. Battery Warnings



The icon of the battery with different status

Note: If player fails to start, the battery may be empty. Please recharge it and try again.

2. Recharging the Battery

- 1) Connect one end of the supplied mini USB cable to the player (make sure player is OFF)
- 2) Connect the other end of the mini USB cable to the computer
- 3) Charging process begins automatically
- 4) When it is fully charged, it will show a full battery icon
- 5) Be sure to safely remove the device

3. Basic Operation

A) POWER ON

- With the player switched to the ON position, long-press the **PLAY** key until the screen turns on.

B) POWER OFF

- In any working status, long-press the **PLAY** key, the LCD will shut down and the system will turn off.
- The product will be switched off automatically when the battery is empty. It will also turn off if left idle for 3 minutes in any working status, unless the Time for “Switch Off Automatically” is set as NEVER (Go to System Setup and then go to Power Mode).

C) Enter/Select

- In any working status, short-press the **PLAY** key to select an option.

D) Directional Keys

- Short-press **◀◀** or **▶▶** to choose the different icons you want to select.

E) Exit (Going to Main Menu)

- Short-press the Menu button to Exit any mode (may need to short-press the Menu button twice

to get to the Main Menu).

Transferring Files

1. Adding Pictures – Copy & Paste

- 1) Connect the player using the USB cable.
- 2) Once the player has been detected, go to My Computer.
- 3) Select the Removable Disk that correlates to your player.
- 4) In a new window, go to the folder of your pictures and copy the picture file(s) you want (jpeg files only).
- 5) Paste the files to the Removable Disk under the PICTURE folder
- 6) After copying is complete, safely remove the Removable Disk.

2. Adding Music – Copy & Paste

- 1) Connect your player using the USB cable.
- 2) Once your player has been detected, go to My Computer.
- 3) Select the Removable Disk that correlates to your player.
- 4) In a new window, go to the folder where you keep your music on your computer (usually “My Music” in My Documents) and then copy the audio file(s) you want.
- 5) Open the Removable Disk, then Open the AUDIO folder and Paste the songs. You may create subfolders within the AUDIO folder.

- We recommend that you do not use Windows Media Player® with this device. However, if you do sync your player with Windows Media Player®, follow these steps:
 - With Windows Media Player® open and the player connected, click on the sync tab.
 - Click on the arrow at the bottom of the sync tab.
 - Go to “Mass Storage” and choose Set Up Sync from the submenu.
 - Uncheck the box marked “Sync this device automatically” in the window that pops up and click “Finish”.
 - Highlight the files you want transferred to your device and drag them into the Sync List column.
 - Hit “Start Sync” to transfer the files.
 - When the conversion is finished, open the removable disk that correlates to your player. There will be a new folder called “Music”.
 - Drag the “Music” folder into the AUDIO folder. Your songs will now be available on the device.

*Note: After the initial syncing of the device, if you want to sync it again and add more songs using Windows Media Player®, you MUST move the “Music” folder back to the main level of the removable disk before adding additional songs, then move it back to the AUDIO folder when finished syncing. To do this, follow these steps:

- Open the removable disk and go to the AUDIO folder.
- Right-click on the “Music” folder and select Cut.
- Hit “Back” on the window to go back to the main level of the removable disk.

- Right-click and select Paste. Your music folder will now be visible next to the AUDIO, VIDEO, PICTURE, and EBOOK folders.
- Go to Windows Media Player and add files to the Sync List that you would like transferred to your player.
- Hit “Start Sync” to transfer the files.
- When transfer is complete, drag the “Music” folder back into the AUDIO folder on the removable disk. Your files will now be available on the player.

6) After copying is complete, safely remove the Removable Disk.

***Please be aware that the player does not support music purchased on iTunes® because those songs are copyright protected. You can download songs from websites such as Emusic.com, MP3.com or any songs in MP3 Format will work with this player. Other sites will also work – just make sure the files are not Protected WMA. For further assistance you can email us at support@slyelectronics.com**

3. Adding Videos

***Note: All videos must be converted into the correct format before transferring.**

-To install the Conversion Software from the CD that came with the player, insert the CD into your computer. Open the CD folder and select AUTORUN. Next, select “Install Transcoding Tool” and then click NEXT. Last, click INSTALL and the program will install to your computer. You are now ready to convert videos.

- 1) Connect your player using the USB cable.
- 2) Open the Video Converter
 - **Go to: Start Menu→Programs→MultimediaTranscoding Tool/Media Convert**
- 3) At the bottom of the converter box (Figure 1), click BROWSE.
- 4) Find the Removable Disk, and select the VIDEO folder as the save destination for the converted files. The converter screen should appear as below (Figure 1):



Figure 1: Video Conversion Software

- 5) Click “Add Files” and select the video file(s) you would like converted.
- 6) Click “Start” to begin video conversion. Your progress is displayed in the bar below the video (see Figure 2). Your converted files will be saved directly to the player. Do not disrupt or move the player while converting files.

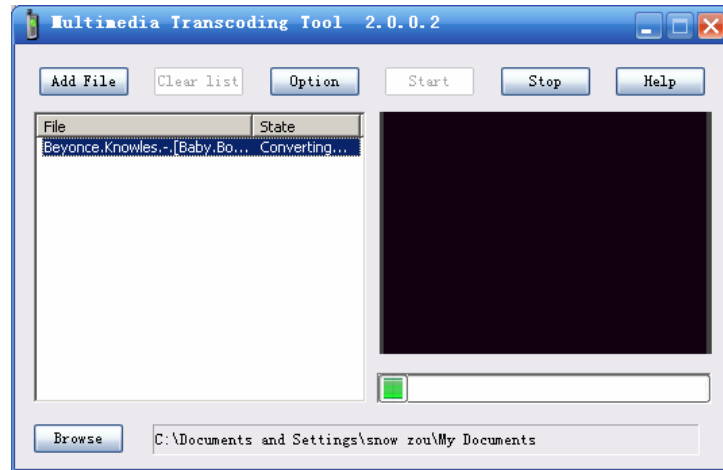


Figure 2: Converting a Video

- 7) After conversion is complete, safely remove the Removable Disk (player).

4. Adding TXT Files (E-Book)

- 1) Connect your player using the USB cable.
- 2) Once your player has been detected, go to My Computer.
- 3) Select the Removable Disk that correlates to your player.
- 4) Go to the folder of your txt file(s) and copy the txt file(s) you want.
- 5) Paste the files to the Removable Disk under the EBOOK folder.
- 6) After copying is complete, safely remove the Removable Disk.

If you have inserted a TF Card: Users have the option to copy the file(s) either to the flash memory or the TF memory; it will show on your computer as a separate Removable Disk signifying Flash and TF memory (Refer to the section on TF Card).

Main Menu

1. The Main Menu



Figure 3: Main Menu

2. Video Player

a) To enter video player mode:

- Use the directional keys to choose the Video Player mode icon in the Main Menu, shown in Figure 4 (below).
- Short-press the **PLAY** key to enter video player mode.



Figure 4: Video Player Mode

b) Video Configuration

- Long-pressing the **MENU** key while in the video player menu will display the sub-menu of the video mode.
- Press **◀◀** or **▶▶** to scroll through the sub-menu options, and short-press the **PLAY** key to access them.
- Press **PLAY** to confirm your choice.
- Press **MENU** to go back to the video menu.

The functions of the video player sub-menu are listed in Figure 5 (below)

Disp Mode	List
	Thumbnail
Loop Mode	Current
	All
	Random
File Protect	Lock
	Unlock

DelFile	Current
	All
Exit	

Figure 5: Video Player Sub-Menu

c) Playing Videos

- Press **⏮** or **⏭** to select the file you want to play in the video mode menu, then short-press the **PLAY** key to begin playing the video.
- While playing, short-press **PLAY** to pause the video, and press it again to resume playing.
- Short-pressing **⏮** or **⏭** will jump to the next or previous file.
- Long-press **⏮** or **⏭** to fast forward or rewind the video.
- Short-press the **VOL** key to access the volume menu, then short-press **⏮** or **⏭** to adjust the music volume. Press the **VOL** key again to exit the volume menu.
- Short-press the **MENU** key during video playback to go back to the video player menu.

d) Exiting the video player mode

- While in the video player menu, short-press the **MENU** key to go back to the Main Menu.

3. Audio Player

a) To enter audio player mode:

- Use the directional keys to choose the Audio Player icon in the Main Menu, shown in Figure 6.
- Short-press **PLAY** to enter the audio player mode.



Figure 6: Audio Player Mode

b) Audio Configuration

- Long-pressing the **MENU** key while in the audio player menu will display the sub-menu of the

audio player.

- Press **◀◀** or **▶▶** to scroll through the sub-menu options, and short-press the **PLAY** key to access them.
- Press **PLAY** to confirm your choice.
- Press **MENU** to go back to the audio player menu.

The functions of the audio player sub-menu are listed below:

Loop Mode	Current
	All
	Random
File Protect	Lock
	Unlock
DelFile	Current
	All
EQ mode	Normal
	Dbb
	rock
	Jazz
	Pop
	Live
Exit	

Figure 7: Audio Player Sub-Menu

c) Audio Playback

Use **◀◀** or **▶▶** to select the file you want to play in the audio mode.

Short-press the **PLAY** key to begin playing the file.

d) Playing Audio Files

- Short-press the **PLAY** key to pause or play the audio file.
- Long-press **◀◀** or **▶▶** to rewind or fast-forward within the track. Pressing and holding **◀◀** or **▶▶** will rewind or fast-forward to the next speed (4x/6x/8x) within the track.
- Short-pressing **◀◀** or **▶▶** will skip to the next or previous track.
- Short-press the **VOL** key, then short-press **◀◀** or **▶▶** to adjust the volume. Press the **VOL** key again to exit volume control.

Note: The volume bar located at the bottom-right will turn blue after pressing the **VOL** key during playback. This indicates that you are ready to control the volume.

- Press the **CAMERA** key during Audio Playback to change Equalizer settings
- Long-press the **MENU** key to change the Repeat settings

The audio playback view is shown below:



Figure 8: Audio Playback Screen

e) Exiting the audio player mode

- While in the audio player menu, short-press the **MENU** key to go back to the Main Menu

4. Picture View

a) To enter the Picture View Mode

- Use the directional keys to choose the Picture View icon in the Main Menu, shown in Figure 9.
- Short-press the **PLAY** key to go to the Picture View Mode.



Figure 9: Picture View Mode

b) Picture View Configuration

- Long-pressing the **MENU** key while in Picture View will display the sub-menu of the Picture View mode.
- Press **◀▶** or **▶▶** to scroll through the sub-menu options, and short-press the **PLAY** key to access them.
- Press **PLAY** to confirm your choice.
- Press **MENU** to go back to the Picture View menu.

The functions of the Picture View sub-menu are shown in Figure 10 (below):

Disp Mode	Thumbnail
	List
	Slide:3S / 5S
File Protect	Lock
	Unlock
Del File	Current
	All

Wall Paper	
Exit	

Figure 10: Picture View Sub-Menu

c) Viewing Pictures

- In the Thumbnail mode, use **◀◀** or **▶▶** to select the row of files you want to show in the Picture View menu, and then short-press the **PLAY** key to show.
- In the List mode, use **◀◀** or **▶▶** to select the picture file you want to view in the Picture View menu, then short-press the **PLAY** key to view the picture.
- In the Slide mode, the pictures will play automatically as a slide show.

d) Exiting the Picture View mode

Press and hold the **MENU** key to go back to Picture menu.

Note: Only JPEG format is supported by this product. Other picture formats should be converted to JPEG.

e) Exiting the picture view mode

- Short-press the **MENU** key to go back to the Main Menu

5. Camera

a) To enter Camera mode

- Use the directional keys to choose the icon of Camera Mode in the Main Menu, shown in Figure 11.
- Short-press the **PLAY** key to enter the Camera mode.



Figure 11: Camera Mode

- The top-left of the viewfinder screen shows the status and photo size.
- The bottom-left of the viewfinder screen is the available number of pictures left with the remaining memory.
- The bottom-right of the viewfinder screen is the zoom.

b) Camera Configuration

- Long-pressing the **MENU** key while in the Camera mode will display the sub-menu of the

Camera shown in Figure 12.

- Press **◀◀** or **▶▶** to scroll through the sub-menu options, and short-press the **PLAY** key to access them.
- Press **PLAY** to confirm your choice.

The functions of the Camera mode sub-menu are shown in Figure 12 (below):

Mode	Single
	Continuous
	Self
Size	320*240
	640*480
	1280*960
	1600*1200
Quality	High
	Middle
	Low
Effect	Normal
	Negative
	Solaris
	Relief
	Binaries
	Sepia
	Black/white
Exit	

Figure 12: Camera Mode Sub-Menu

c) Taking pictures

- Short-press the **PLAY** or **CAMERA** key to take photos.
- Press **◀◀** or **▶▶** to adjust the zoom level.

d) Exiting the Camera mode

- While in the Camera menu, short-press the **MENU** key to go back to the Main Menu.

e) Reviewing your photos

- Go to the Main Menu and then go to Picture View (Figure 9).

6. DV

a) Entering the DV mode (Digital Video Recorder)

- Use the directional keys to choose the DV Mode icon in the Main Menu, shown in Figure 13.
- Short-press the **PLAY** key enter the DV mode.



Figure 13: DV Mode

- The top-left of the viewfinder screen shows the status and video size.
- The bottom-left of the viewfinder screen is the available video time with the remaining memory.
- The bottom-right of the viewfinder screen is the zoom level.
- When the flash memory is full, a sign “memory full” will appear at the top-right of the LCD and the current video being recorded will be stopped and stored.

b) DV Configuration

- Long-pressing the **MENU** key while in the DV mode will display the sub-menu.
- Press **◀◀** or **▶▶** to scroll through the sub-menu options, and short-press the **PLAY** key to access them.
- Press **PLAY** to confirm your choice

The functions of the DV mode are shown in Figure 14 (below):

Video Size	160*128
	320*240
Video Quality	High
	Middle
	Low
Effect	Normal
	Negative
	Solaris
	Relief
	Binaries
	Sepia
	Black& White
Exit	

Figure 14: DV Mode Sub-Menu

c) Recording in DV mode

- Press **◀◀** or **▶▶** to adjust the zoom level before you begin recording.
- Short-press the **PLAY** key to start recording.
- Short-press the **PLAY** key again when you are finished recording and it will automatically save what was recorded.

d) Exiting the DV mode

- While in the DV menu, short-press the **MENU** key to go back to the Main Menu.

e) Reviewing Your Videos

- Go to the Main Menu and select Video Player (Figure 4)

7. AudioRecord Mode

a) Entering the AudioRecord mode

- Use the directional keys to choose the Audio Record mode icon in the Main Menu, shown in Figure 15.
- Short-press the **PLAY** key to go to the Audio Record mode.



Figure 15: Audio Record Mode

b) Record

- Short-press the **PLAY** key to start the recorder.
- Short-press **PLAY** again to suspend the current audio recording.
- Press the **MENU** key to finish and save the audio recording.

c) Exiting the Audio Recording mode

- Short-press the **MENU** key to go back to the Main Menu.

d) Review the Recorded file

- Go to the Main Menu and then go to the Audio Player (Figure 6)

8. Learning: E-Book Function & .txt files

a) Entering the Learning mode (E-Book Function and Reading .txt files)

- Use the directional keys to choose the Learning Mode icon in the Main Menu, shown in

Figure16.

- Short-press **PLAY** to go to the Learning mode.



Figure 16: Learning Mode

b) Accessing E-Books

- Select the TXT icon to access your E-books or .TXT files (Figure 17).

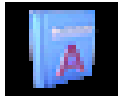


Figure 17: TXT Icon

c) Learning Mode Configuration

- Long-pressing the **MENU** key while in the Learning mode will display the sub-menu.
- Press **◀** or **▶** to scroll through the sub-menu options, and short-press the **PLAY** key to access them.
- Press **PLAY** to confirm your choice

The functions of the Learning mode sub-menu are shown in Figure 18 (below):

File Protect	Lock	
	Unlock	
Del File	Current	
	All	
Exit		
When reading TEXT, short-press the MENU key to display the following:		
(1)		
Find		
Continue to Search		
Exit		

Figure 18: Learning Mode Sub-Menu

d) Reading TXT Files

- When reading TXT files, use **◀◀** or **▶▶** to scroll up and down the selected txt file.

e) Exiting the Learning mode

- While in Learning mode, short-press the **MENU** key to go back to the Main Menu.

9. Tool

a) Entering the Tool mode

- Use the directional keys to choose the Tool mode icon in the Main Menu, shown in Figure 19.
- Short-press the **PLAY** key to go to the Tool mode.



Figure 19: Tool Mode

- There are four choices under Tool mode: Calculator, Notepad, Memory, and Version.



Calculator NotepadMemoryVersion

Calculator

- Use **◀◀**, **▶▶** and the **VOL** key to scroll through the numbers and symbols.
- Short-press the **PLAY** key to confirm the input.
- Short-press the **MENU** key to go back to the Main Menu.

Notepad

- Read and write txt files in the notepad.
- Use **◀◀**, **▶▶** and the **VOL** key to scroll through the letters and symbols.
- Long-press the **MENU** key to display the sub-menu of the notepad.
- Press **MENU** to go back to the Tools menu.

Creating TXT files in the Notepad

- To create a txt file,select NEW from the Notepad’s sub-menu.
- Use ◀◀, ▶▶ and the VOL key to select letters,symbols and numbers.
- Short-press the PLAY key to confirm.

*Note:This product only supports txt files less than 64kb,or it will show overload or error.

Memory

- The memory option shows the configuration of the storage devices.
- Use ◀◀ or ▶▶ to choose between “FLASH” and “SD” (TF card **not included**).
- Press VOL to switch between “WORKSPACE” and “FORMAT”.
- Press PLAY to confirm your selection.
 - Workspace is the memory that will be used, and selecting Format will erase the contents of the selected memory device.

Version

- This shows the version of the product.
- Press the MENU key go back to the Tools mode.

b) Exiting the Tools mode

- When in Tools menu, short-press the MENU key to go back to Main Menu.

10. System Setup

- Use the directional keys to choose the System Setup icon in the Main Menu, shown in Figure 20.
- Short-press the PLAY key to select.



Figure 20: System Setup Mode

- There are six choices under System Setup mode: Language, Default, Sound, Auto Off, Style and Power Mode.



Language Default Sound Auto Off Style Power Mode

Language	Default	Sound		Auto Off	Style	Power Save
English	Yes	Speaker	On	Never	Lovely	Never
Chinese	No		Off	3 Minutes	Pretty	Half Minutes
Chinese T		Key Tone	On	15 Minutes		One Minutes
Japanese			Off	60 Minutes		Three Minutes
Korean						
French						
German						
Spanish						
Portuguese						
Italian						
Russian						
Polish						

Figure 21: The System Setup Menu

Communicate with PC

1. U-Disk Driver Setup (For Windows 98 Users Only)

This product does not support OS versions NO older than Windows 2000 without installing the driver.

- Put the included CD-ROM into your PC.
- Connect the player to your PC using the USB cable.
- Your PC will ask to setup the USB driver.



- Press “Next” and then choose the item of “Add New Hardware Wizard” in the window.
- Click “Next” and press “View”.



- Select the folder of WIN98 in the CD-ROM drive and select “Next”.



- Click “Setup”. After the setup, reboot your PC.
- Connect the player to the PC again.
- Your Removable Disk will be in “My Computer.”

2. Connect with PC

- Connect the player to your PC using the USB cable.

3. U-Disk Status

- While the player is on, connect the player to PC with USB cable, and it is in U-Disk status.

4. Adding a TF card

This product supports TF cards with the slot shown below:

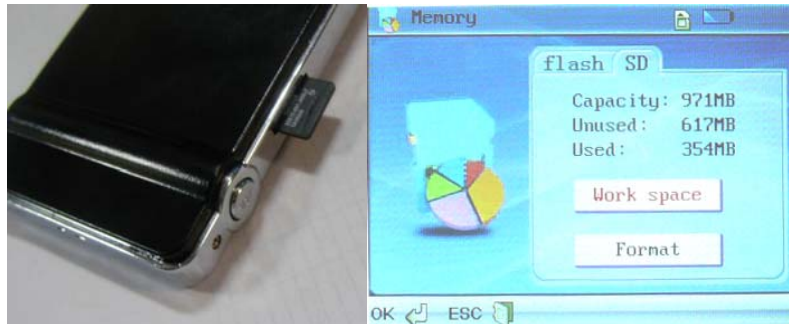


Figure 22: TF Card

- Turn the unit OFF and then insert the MicroSD card (as shown above)
- Turn on the Player and go to the Tools mode (See Figure 19)
- Select the Memory option and then use the arrows to switch to the SD Tab (See Figure 22)
- Select Work Space (should be highlighted in Red once selected) and press Play.
- Turn the player Off and then connect it to the computer. Go to My Computer → Removable Disk and then you will see 4 files (Audio, Video, Picture, E-Book). Add music to the Audio Folder, Video's & Movies to the Video folder, etc. Supports up to an 8GB TF Card.

5. Download/Upload/Delete Files

- When the player is connected to the PC, the player will be recognized as a Removable Disk.
- It is considered as the hard disk or softdisk in the PC itself.
- Add and remove files to the player the same way you would move local files on your PC.
- Copy and paste the files into the correct folders of the Removable Disk.
 - Do NOT delete or rename the 4 files that came pre-loaded (AUDIO, VIDEO, PICTURE, EBOOK). You may create subfolders within these files.

Warning:

Do not disconnect the USB cable during download or upload to avoid product damage.

6. Formatting The Player

- With the player connected, go to “My Computer” and locate the removable disk that corresponds with the player.
- Right click on the icon and choose “Format”.
- Make sure the file system says “FAT” and click Start.

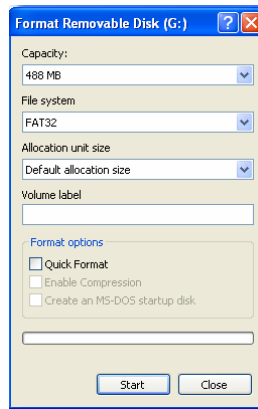


Figure 23: Formatting Screen

- In the Warning window, select “OK” to start the formatting (this will erase all data on the player).



Figure 24: Formatting Confirmation Window

Warning:

- Select the proper format type before formatting or else the product may be damaged.
- DO NOT remove the USB cable from the player during formatting, it may cause damage to the player.
- If formatting is necessary, 4 directories MUST be created for the player to resume working
 *Note: Folders must be named “AUDIO”, “PICTURE”, “VIDEO”, and “EBOOK”



7. Disconnecting from the PC

After transferring files to the player, it must be disconnected properly from your computer. Please follow the instructions below.

To safely remove hardware:

- 1) Right-click the “Safely Remove Hardware” icon on the bottom right corner of your screen.
- 2) Select “Safely Remove Hardware”
- 3) A dialog box pop up (Refer to Figure 25 below)

- 4) Select USB mass storage device.
- 5) Click STOP.
- 6) Click OK.
- 7) You will be prompted that you may safely remove the device.
- 8) Disconnect the player from the computer by removing the USB cable from the player.

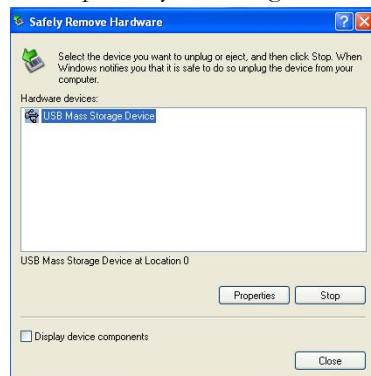


Figure 25: Safely Remove Hardware Window

Technical Specifications

Profile	82mm*52mm*12.5mm (length×width×thickness)	
Panel	2.4' LCD QVGA	
USB	USB2.0	
Memory	supported 1GB\2GB\4GB\8GB (optional)	
Record	Format	AMR
	Length	70 Hours (128MB)
MP3&WMA	Compress rate	32Kbps – 384Kbps
	Frequency response	20Hz~20KHz
	Th-D	<0.1%
	SNR	>85dB
CMOS Camera	Audio Power	5mW+5mW (32Ω)
	Frame	30fps
	Color bit	24bit
	Focus	1x to 2x
Photo format	JPG	
Video format	3GP · ASF · MP4 · AVI	
Resolution	320*240	
Frame Freq.	NTSC 30fps ; PAL.25fps	
AV-out Voltage	> / =1V (VPP)	
Music format	MP3 · WMA · AMR · AAC-LC · WAV	
Picture Format	JPG	
Temperature	-5 ~ 40	
Menu language	English/Chinese/Trad. Chinese/Japanese/Korean/French/German/Spanish/Portuguese/Italian/Russian/Polish	

Common Problems

*****This unit does NOT have a reset button*****

Problem	Possible Reason	Solution
Unit will not turn on	Battery empty Invalid operation	Recharge for at least 4 hours; Switch player off and then ON (and Press Play for 7 seconds).
Auto off	Battery shortage;	Recharge; Go to System Setup → Power Mode
USB in, but NO Removable Disk (computer does not recognize the player)	Battery empty USB wire damaged USB disabled by PC BIOS OS does NOT support USB Wire wrongly connected Any issues of the PC	Recharge (Make sure player is in OFF position) Replace new wire Set USB ENABLED Update the OS driver Connect again Reboot PC
When playing, NO sound	Volume too low Wrong audio out device The music file is corrupted Bad earphone Format failure	Turn volume up Set right parameter Download standard MP3 file (try it on computer) Try different earphones Format under "FAT"
Doesn't save: "Save Failure"	Storage full Wrong save path	Delete some files or unused files Check the available memory
Words do not appear correctly	Language wrong Language is not supported	Go to System Setup → Language & set to English Check our website for more information

If you see your songs on the player but they will not play then please make sure that your songs are in the Audio Folder (can not be in a different folder but in may be in a subfolder Inside the AUDIO folder).

Please note that opening and/or dismantling the player voids the warranty

Please visit the FAQ section of our website. Also check out our Updates section for software upgrades.

**For more answers to your frequently asked questions, please visit our website at:
www.slyelectronics.com**

E-mail Customer Service: support@slyelectronics.com

You should receive a response to your email within 1-2 business days.

iTunes is a registered trademark of Apple Inc.

Windows Media Player is a registered trademark of Microsoft Corporation.